



City Gardens, Spinners Way, Manchester

£1,000 PCM

Ascend Properties are delighted to introduce to market this modern furnished apartment in City Gardens, a popular 11 story modern development in Castlefield, just on the cusp of Manchester City Centre.

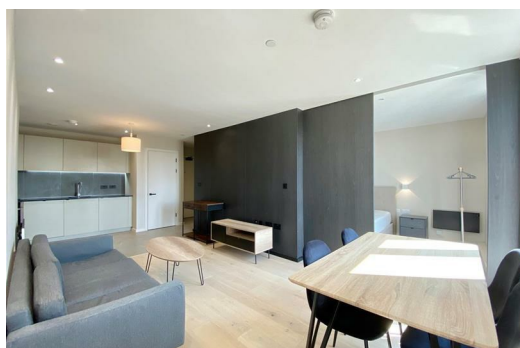
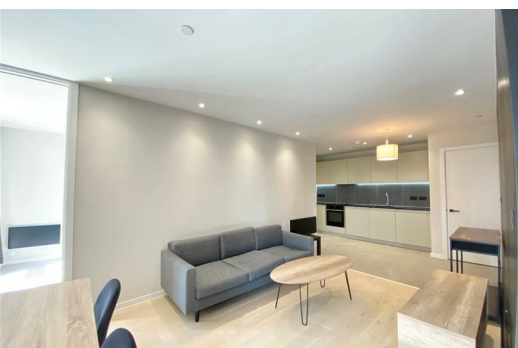
Castlefield is known for its vibrant, modern waterside living, complemented by appealing bars, restaurants, music and entertainment. Among the attractions are the celebrated Castlefield Bowl outdoor arena, the Castlefield Gallery and the popular Museum of Science and Industry.

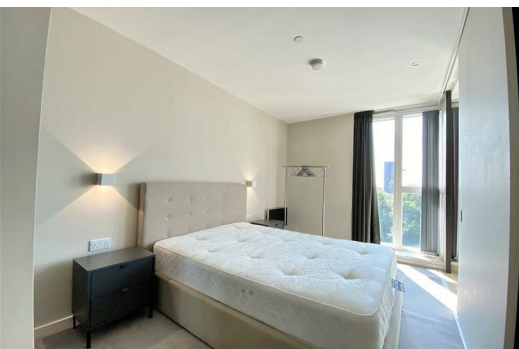
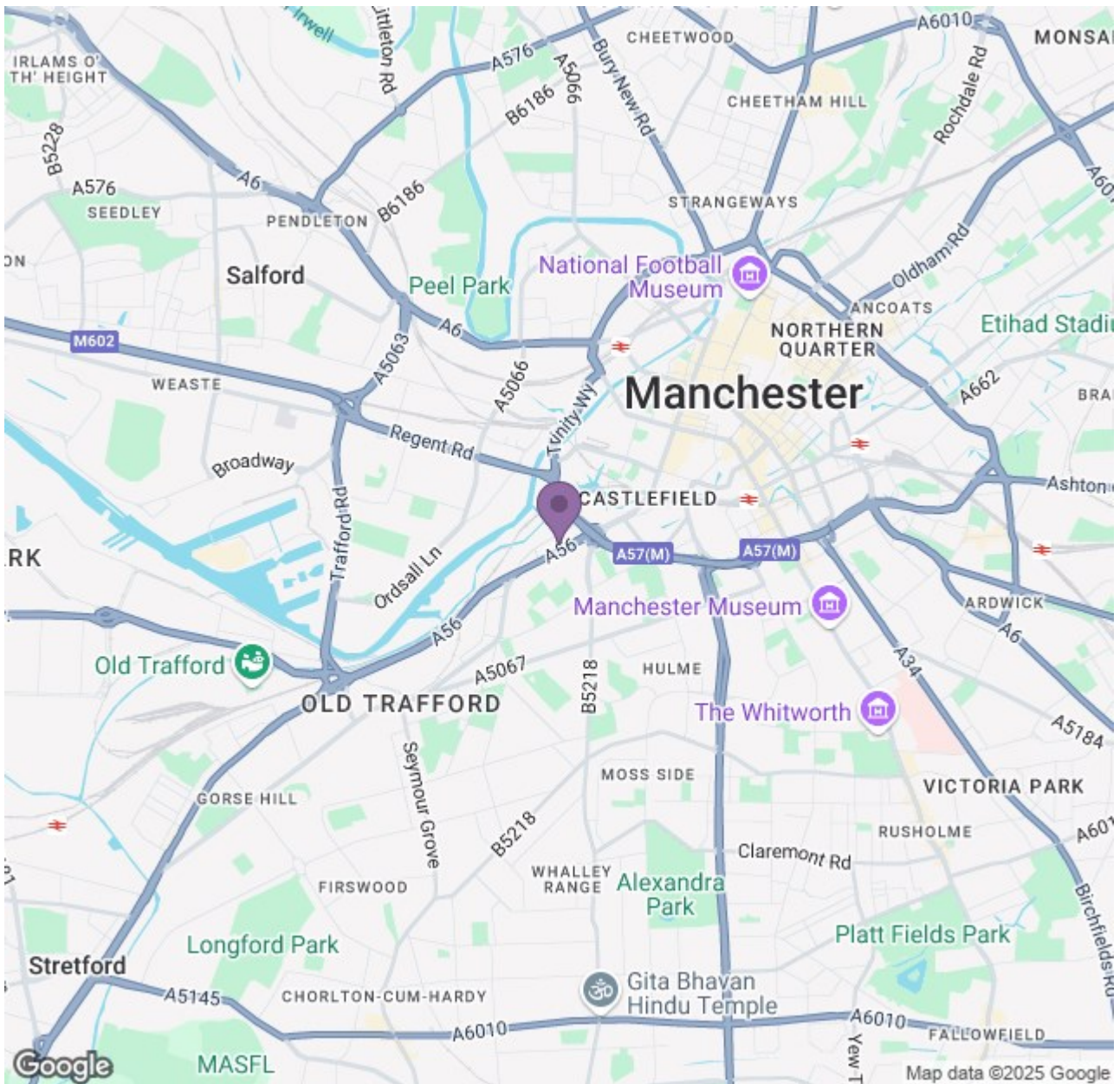
This one-bedroom apartment features one double bedroom and sliding loft style doors, a stylish open plan kitchen and living area benefiting from the large sky garden balcony/terrace.

This development benefits from a Roof Garden with views across Manchester city centre, bike storage and private balconies.

*Marketing images have been used for advertising purposes. Fixtures and will fittings vary.
Video walk-through is of the exact property.

Available 27th August 2025.





Energy Efficiency Rating		Current	Target
Energy Efficiency Rating	Energy Efficiency Rating	85	85
A	A		
B	B		
C	C		
D	D		
E	E		
F	F		
G	G		
England & Wales		2019 EPC	2019 EPC

Environmental Impact (CO ₂) Rating		Current	Target
Environmental Impact (CO ₂) Rating	Environmental Impact (CO ₂) Rating		
A	A		
B	B		
C	C		
D	D		
E	E		
F	F		
G	G		
England & Wales		2019 EPC	2019 EPC